



# CATALOGUE





## hexa4GRIP® – The brand for more performance and safety:

- hexa4GRIP® shoe soles and sole sheets stand for innovative and high-quality products for casual, outdoor and safety footwear – designed and developed by hexa4GRIP® and the ok Gummiwerk.
- We continue to expand the brand successful with new products.
- The hexa4GRIP® products offer our customers real added value in terms of application, functional properties, weight, comfort and sustainability.  
The designs are functional, innovative and contemporary. The rubber compounds are optimised for the respective application and have outstanding durability.

### Soles

BUSINESS SAFETY	3
LIFESTYLE	4
LIFESTYLE WITH HEEL	5
PLAYSCHOOL	6
RUNNER	7
RUNNING	8
SCOOTER	9
SKATE	10
SPIDER	11
TENNIS	12
TRAIL-RUNNER	13
URBAN	14

### Plates

ALPHA LIGHT	15
ALPHA SAFETY	16
HIGH GRIP	17
HIGH GRIP BICOLOR	18
TRAIL-GRIP	19
URBAN	20

### Other

SUSTAINABLE PRODUCTION	21
SHOE TRAY	22



#### Design, development and marketing

hexa4GRIP  
Dillenburger Straße 83  
D-51105 Köln, Germany  
Tel. +49(0)221 837 90 83  
info@hexa4grip.de  
www.hexa4grip.de



#### Production and distribution

ok Gummiwerk Otto Körting GmbH  
Am Hastebach 2  
D-31789 Hameln, Germany  
Tel. +49(0)5151 95 37 0  
info@ok-gummiwerk.de  
www.ok-gummiwerk.de



Outsole cross-section | Cleatdepth 2,7 mm | Effective thickness 4,0 mm



## Features

- Specially developed for work shoes
- Also available for standard-last and steel toe cap
- Functional and contemporary design
- Lighter than comparable products
- Oil-, acid- and fuel resistant
- Antistatic and slip-resistant
- High premium NBR-quality
- Environmentally friendly production in Germany

designed ■  
 developed and ■  
 made in Germany ■

## Performance

- Hardness ca. 60 shore A
- Density ca. 1,18 g / cm<sup>3</sup>
- Abrasion ca. 115 mm<sup>3</sup>

**Order-based production**

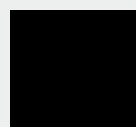
**Not in stock**

## Sizes

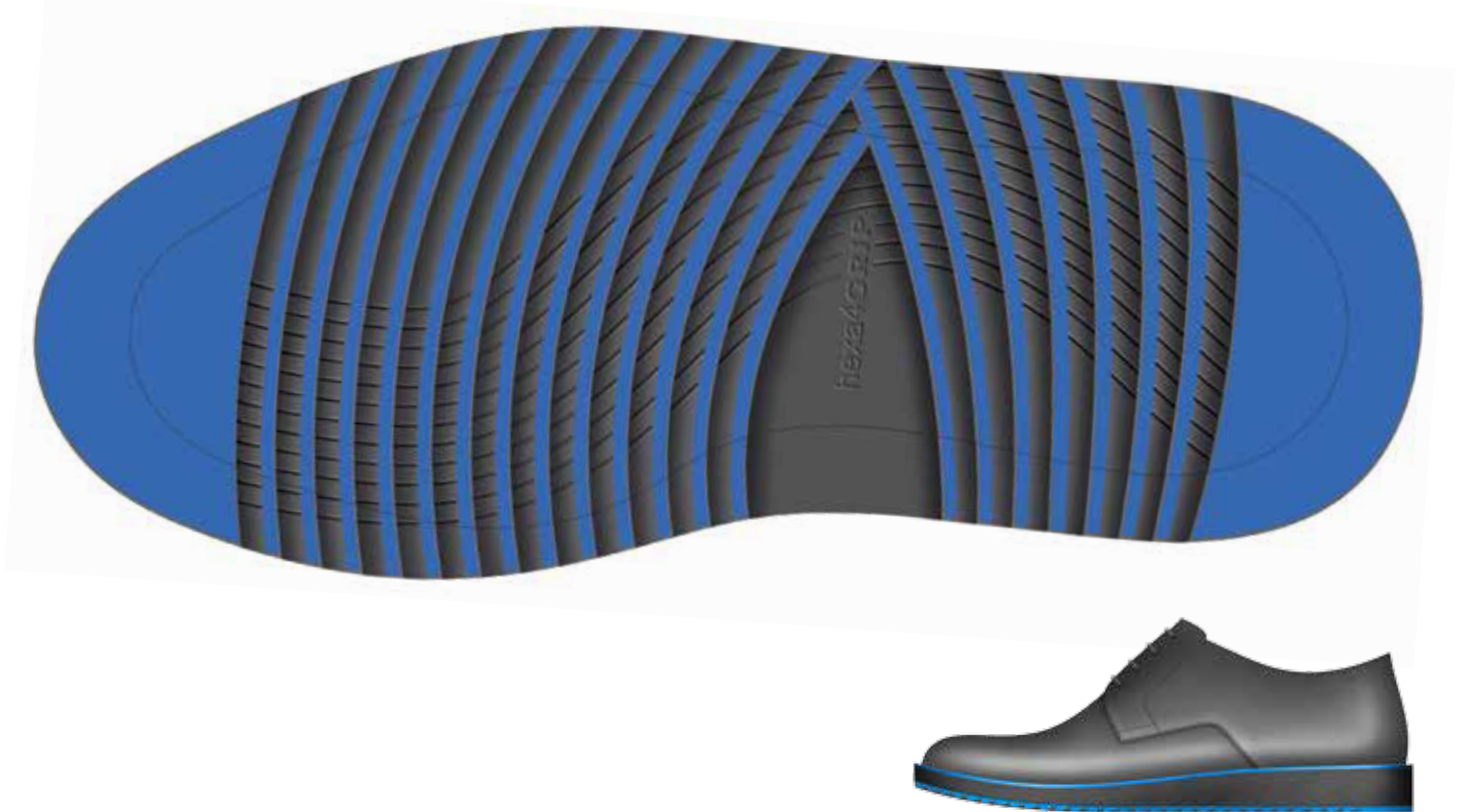
- 41
- 42
- 43
- 44
- 45
- 46
- 47
- 48

## Colors

- 86 black



Outsole cross-section | Cleatdepth 2,0 mm | Effective thickness 2,5 mm



## Features

- Lifestyle outsole with continuously cleated design for sneakers
- Vulcanisation of both color components in one work step
- Easy to process to different sizes
- Sharp-edged profile with unique saw-tooth-optics
- Abrasion-resistant, impact-elastic and slip-resistant
- Environmentally friendly production in Germany

designed ■  
 developed and ■  
 made in Germany ■

## Performance

- Hardness ca. 70 shore A
- Density ca. 1,18 g / cm<sup>3</sup>
- Abrasion ca. 150 mm<sup>3</sup>

## Sizes

- XXL

## Colors

- 89 blue-black
- 92 orange-black
- 96 red-black
- 86 black





# LIFESTYLE OUTSOLE

WITH HEEL



Outsole cross-section | Cleatdepth 2,0 mm | Effective thickness 2,5 mm



## Features

- Lifestyle outsole with separate heel
- Vulcanisation of both colour components in one work step
- Easy to process to different sizes
- Sharp-edged profile with unique saw-tooth-optics
- Abrasion-resistant, impact-elastic and slip-resistant
- Environmentally friendly production in Germany

designed   
developed and   
made in Germany 

## Performance

- Hardness ca. 70 shore A
- Density ca. 1,18 g / cm<sup>3</sup>
- Abrasion ca. 150 mm<sup>3</sup>

## Sizes

- XXL

## Colors

- 89 blue-black
- 92 orange-black
- 96 red-black
- 86 black





Outsole cross-section | Cleatdepth 4,0 – 3,0 mm | Effective thickness 1,5 mm



## Features

- Quality for children's footwear
- Free of harmful substances
- Based on natural rubber
- Unique design
- Displacer based on innovative honeycomb structure
- Optimized flexibility for forefoot and back-foot area
- Environmentally friendly production in Germany

designed ■  
 developed and ■  
 made in Germany ■

## Performance

- Hardness ca. 55 shore A
- Density ca. 1,15 g / cm<sup>3</sup>
- Abrasion ca. 100 mm<sup>3</sup>

## Order-based production

Not in stock

## Sizes

- 25
- 26
- 27
- 28
- 29
- 30
- 31
- 32
- 33

## Colors

- 14 white
  - 08 amber
  - 56 stone grey
  - 15 brown with cork
- variety of colours  
available





# hexa4<sup>®</sup> GRIP RUNNER



Outsole cross-section | Cleatdepth 3,0 mm | Effective thickness 2,0 mm



## Features

- For top-seller sneakers such as Reebok "Classic", Nike "MD Runner 2" or New Balance "574"
- Wide outline/Suitable for orthopaedic shoe technology
- Innovative and functional design
- High quality SBR-rubber
- Ultimate durability
- Environmentally friendly production in Germany

designed ■  
developed and ■  
made in Germany ■

## Performance

- Hardness ca. 70 shore A
- Density ca. 1,18 g / cm<sup>3</sup>
- Abrasion ca. 150 mm<sup>3</sup>

## Sizes

- 42 – 44
- 45 – 47

## Colors

- 14 white
- 22 stone (honey)
- 86 black

# hexa4<sup>®</sup> GRIP RUNNING



Outsole cross-section | Cleatdepth 2,0 mm | Effective thickness 1,5 mm



## Features

- Significant weight reduction through leave-out-areas
- Particularly flexible due to integrated flexgrooves
- Optimal outline for universal use
- Extreme wear-resistant due to high-performance rubber quality
- Impact-elastic and slip resistant
- Innovative and functional design
- Environmentally friendly production in Germany

designed ■  
developed and ■  
made in Germany ■

## Performance

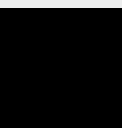
- Hardness ca. 70 shore A
- Density ca. 1,18 g / cm<sup>3</sup>
- Abrasion ca. 150 mm<sup>3</sup>

## Sizes

- 42 – 44

## Colors

- 86 black





# hexa4<sup>®</sup> GRIP SCOOTER



Outsole cross-section | Cleatdepth 3,0 mm | Effective thickness 2,0 mm



## Features

- Sharp-edged profile with flexgrooves
- Extensive ground contact due to profile design
- Extraordinary grip on wet surfaces due to 3mm profile-height
- Optimal support of biomechanical movement /very safe walking characteristics
- Very suitable for sportive shoe types due to heel- and ball-area-points
- Unique design
- High quality SBR-rubber
- Environmentally friendly production in Germany

designed ■  
developed and ■  
made in Germany ■

## Performance

- Hardness ca. 70 shore A
- Density ca. 1,18 g / cm<sup>3</sup>
- Abrasion ca. 150 mm<sup>3</sup>

## Sizes

- 36 – 38
- 39 – 41
- 42 – 44
- 45 – 47
- 48 – 50

## Colors

- 22 stone (honey)
- 86 black



# hexa4<sup>®</sup> GRIP SKATE



Outsole cross-section | Cleatdepth 2,5 mm | Effective thickness 2,0 mm



## Features

- For top-seller sneakers such as Vans „Old Skool“ and other Skate-Sneaker
- Innovative and functional design
- High quality SBR-rubber
- Ultimate durability
- Environmentally friendly production in Germany

designed ■  
developed and ■  
made in Germany ■

## Performance

- Hardness ca. 70 shore A
- Density ca. 1,18 g / cm<sup>3</sup>
- Abrasion ca. 150 mm<sup>3</sup>

## Sizes

- 42 – 44

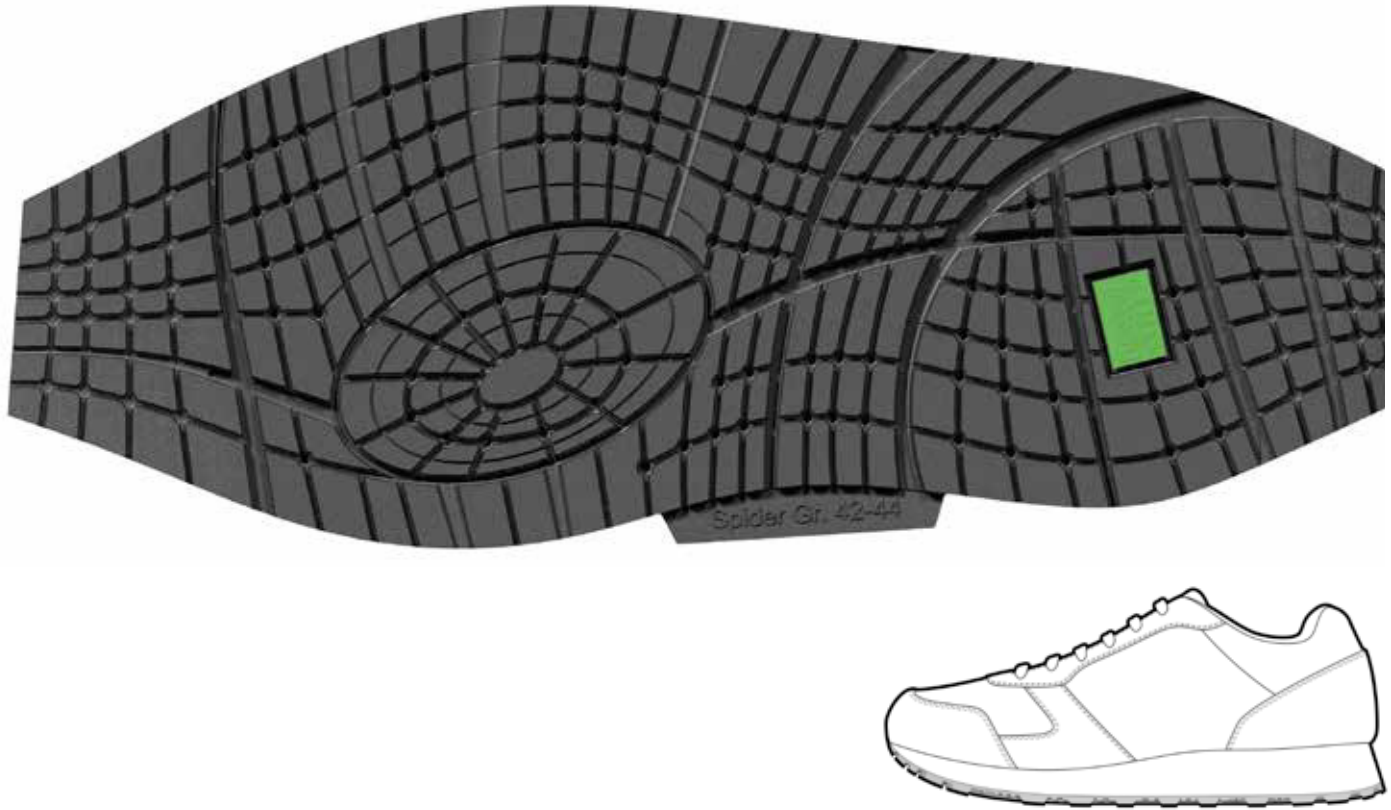
## Colors

- 14 white
  - 22 stone (honey)
  - 86 black
- further colors  
on request

# hexa4<sup>®</sup> GRIP SPIDER



Outsole cross-section | Cleatdepth 2,5 mm | Effective thickness 2,0 mm



## Features

- Sharp-edged precise profile
- Extensive ground contact due to profile design
- Good grip on wet surfaces
- Optimal support of biomechanical movement /very safe walking characteristics
- High quality NBR-rubber
- Oil-, acid- and fuel resistant
- Antistatic, impact-elastic and slip resistant
- Suitable for safety shoes
- Environmentally friendly production in Germany

designed ■  
developed and ■  
made in Germany ■

## Performance

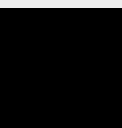
- Hardness ca. 60 shore A
- Density ca. 1,18 g / cm<sup>3</sup>
- Abrasion ca. 115 mm<sup>3</sup>

## Sizes

- 36 – 38
- 39 – 41
- 42 – 44
- 45 – 47
- 48 – 50

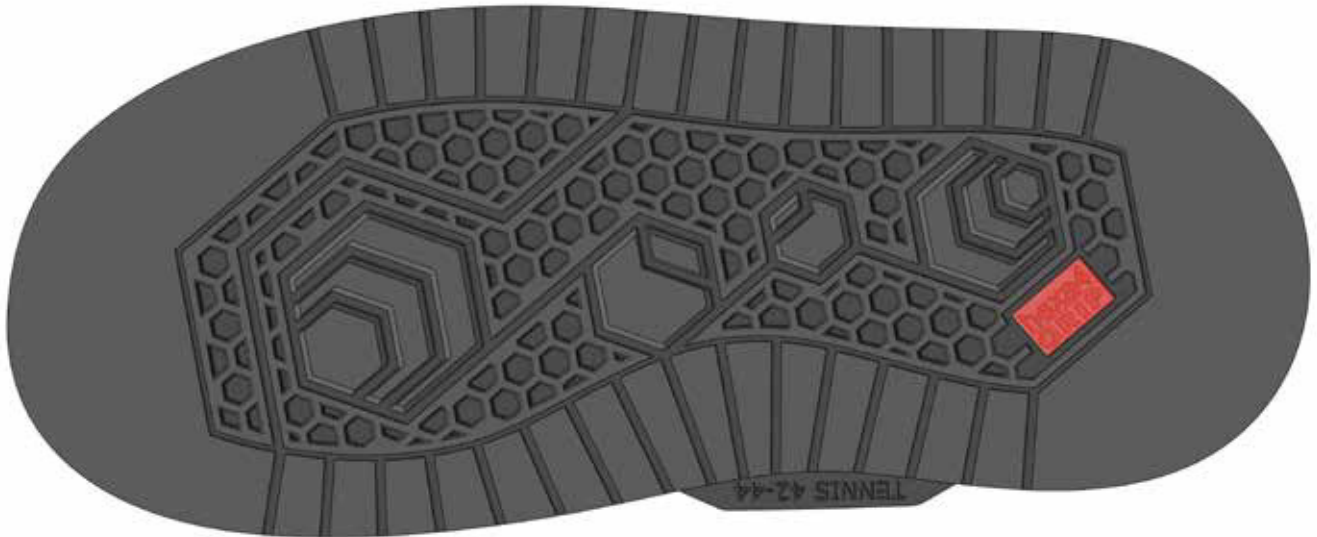
## Colors

- 86 black





Outsole cross-section | Cleatdepth 3,0 mm | Effective thickness 2,0 mm



## Features

- For top-seller sneakers such as Adidas „Stan Smith“ or Nike „Air Forcel“
- Wide outline/Suitable for orthopaedic shoe technology
- Innovative and functional design
- High quality SBR-rubber
- Ultimate durability
- Environmentally friendly production in Germany

designed ■  
 developed and ■  
 made in Germany ■

## Performance

- Hardness ca. 70 shore A
- Density ca. 1,18 g / cm<sup>3</sup>
- Abrasion ca. 150 mm<sup>3</sup>

## Größen

- 42 – 44
- 45 – 47

## Farben

- 14 white
- 22 stone (honey)
- 86 black



## Features

- Specifically developed for the repair of trail-running-shoes
- Extreme-grip profile design
- Functional unique design
- High quality SBR-rubber
- Environmentally friendly production in Germany

designed ■  
 developed and ■  
 made in Germany ■

## Performance

- Hardness ca. 70 shore A
- Density ca. 1,18 g / cm<sup>3</sup>
- Abrasion ca. 150 mm<sup>3</sup>

## Sizes

- 42 – 44
- 45 – 47

## Colors

- 14 white
- 22 stone (honey)
- 86 black

Outsole cross-section | Cleatdepth 3,5 mm | Effective thickness 2,0 mm



## Features

- Optimal outline for universal application
- Open structure with flattened profile-blocks
- Excellent dirt extraction
- Wear-resistant, impact-elastic and slip-resistant
- Easy to glue
- Free confectionery /no fixed profile areas
- Unique design
- High quality SBR-rubber
- Environmentally friendly production in Germany

designed ■  
developed and ■  
made in Germany ■

## Performance

- Hardness ca. 70 shore A
- Density ca. 1,18 g / cm<sup>3</sup>
- Abrasion ca. 150 mm<sup>3</sup>

## Sizes

- I
- II
- III

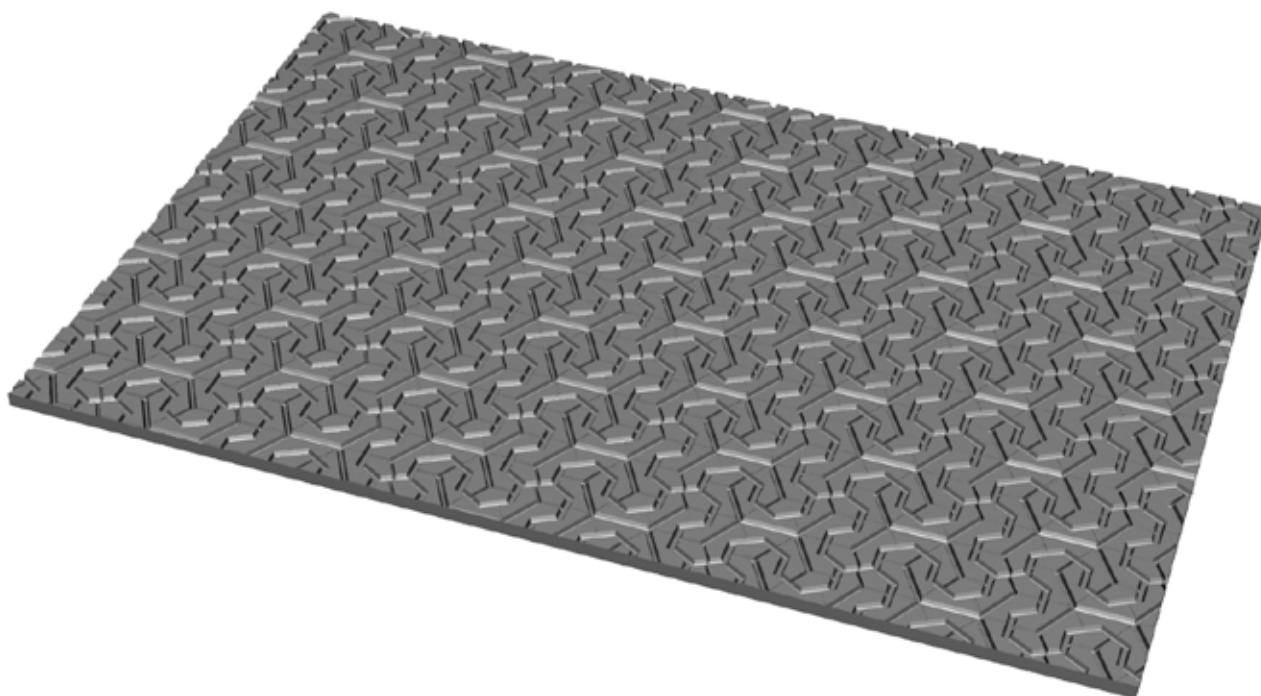
## Colors

- 22 stone (honey)
- 86 black





Outsole cross-section | Cleatdepth 1,6 mm | Effective thickness 4,4 mm (2,4 mm)



## Features

- SBR-base premium cellular-rubber quality
- Extremely soft, impact-elastic and light
- Extreme wear-resistant
- Multi-directional profile design for universal application
- Easy to handle in nearly every direction
- Environmentally friendly production in Germany

designed ■  
 developed and ■  
 made in Germany ■

## Performance

- Hardness ca. 40 shore A
- Density ca. 0,40 g / cm<sup>3</sup>
- Abrasion ca. 150 mm<sup>3</sup>

## Thickness

- 4,0 mm
- 6,0 mm

## Colors

- 14 white
  - 17 grey beige
  - 19 stone
  - 46 dark brown
  - 86 black
- further colors  
on request

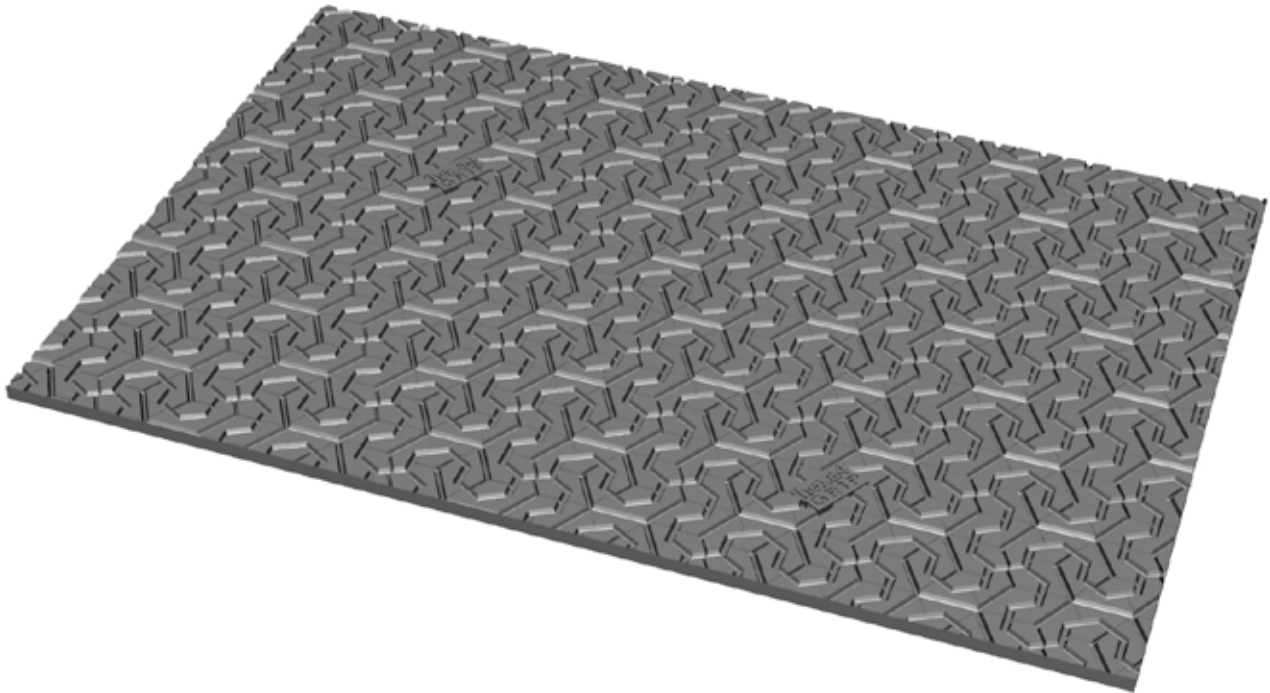




# ALPHA SAFETY



Outsole cross-section | Cleatdepth 2,5 mm | Effective thickness 2,5 mm



## Features

- Premium NBR quality
- Maximum slip-resistance for the work shoe sector
- Unique design
- Also usable for the leisure or outdoor sector
- Optimized dirt-ejection
- Oil-, acid- and fuel resistant
- Antistatic
- Environmentally friendly production in Germany

designed ■  
developed and ■  
made in Germany ■

## Performance

- Hardness ca. 60 shore A
- Density ca. 1,18 g / cm<sup>3</sup>
- Abrasion ca. 115 mm<sup>3</sup>

## Sizes

- ca. 61 x 111 cm  
(0,6771 qm)

## Thickness

- 5,0 mm

## Colors

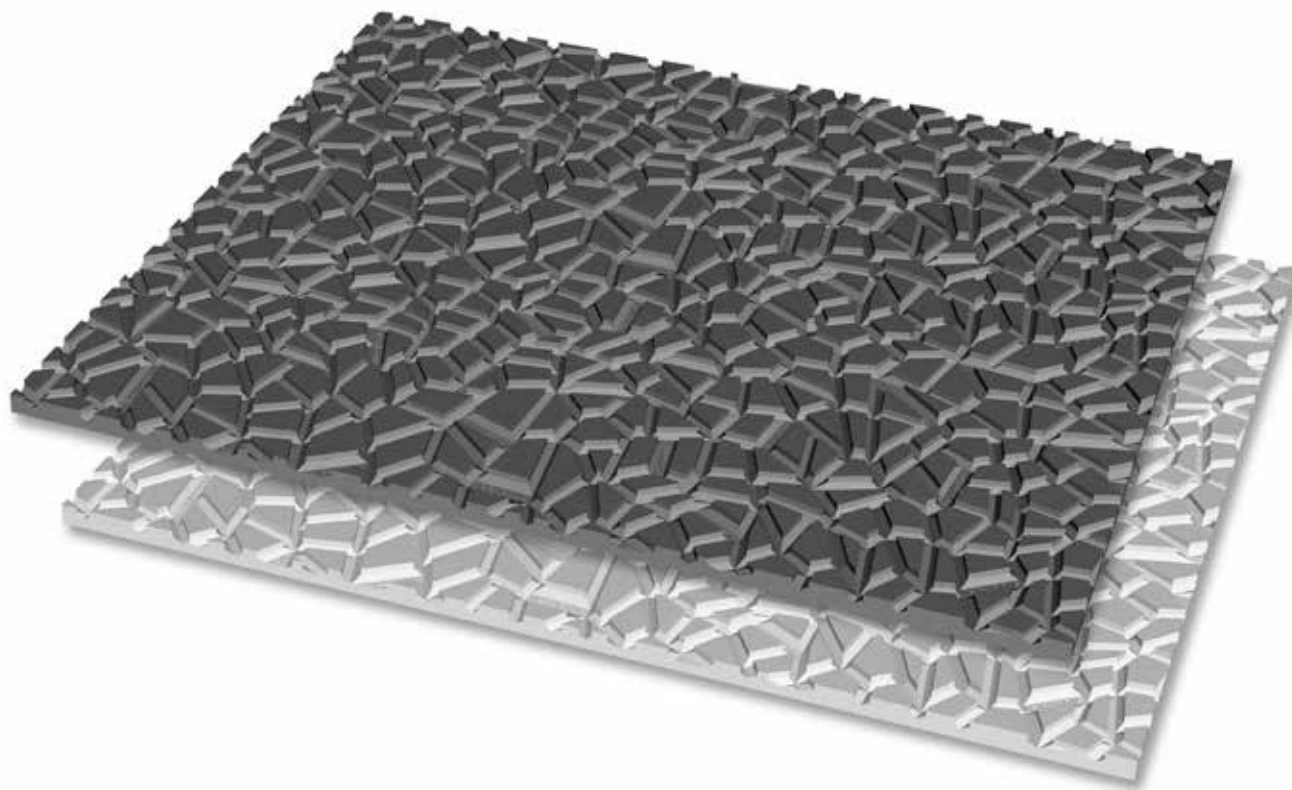
- 07 red (on request)
- 86 black



# hexa4<sup>®</sup> GRIP HIGH GRIP



Outsole cross-section | Cleatdepth 2,5 mm | Effective thickness 4,0 mm (4,0 mm)



## Features

- Premium NBR quality
- Maximum slip-resistance for the work shoe sector
- Excellent slip-resistant confirmed by PFI and TÜV
- Innovative profile design
- Also usable for leisure or outdoor sector
- Optimized dirt-ejection
- Oil-, acid- and fuel resistant
- Antistatic
- Environmentally friendly production in Germany

designed ■  
developed and ■  
made in Germany ■

## Performance

- Hardness ca. 60 shore A
- Density ca. 1,18 g / cm<sup>3</sup>
- Abrasion ca. 115 mm<sup>3</sup>

## Sizes

- ca. 61 x 111 cm  
(0,6771 qm)

## Thickness

- 4,5 mm
- 6,5 mm

## Colors

- 71 lightgrey
- 86 black





Outsole cross-section | Cleatdepth 2,2 mm | Effective thickness 2,3 mm



## Features

- Premium SBR quality
- High-GRIP bicolor-Edition for the leisure sector
- Unique innovative design
- Innovative profile design
- Optimized dirt-ejection
- Environmentally friendly production in Germany

designed ■  
 developed and ■  
 made in Germany ■

## Performance

- Hardness ca. 70 shore A
- Density ca. 1,18 g / cm<sup>3</sup>
- Abrasion ca. 120 mm<sup>3</sup>

## Sizes

- ca. 61 x 111 cm  
 (0,6771 qm)

## Thickness

- 4,5 mm

## Colors

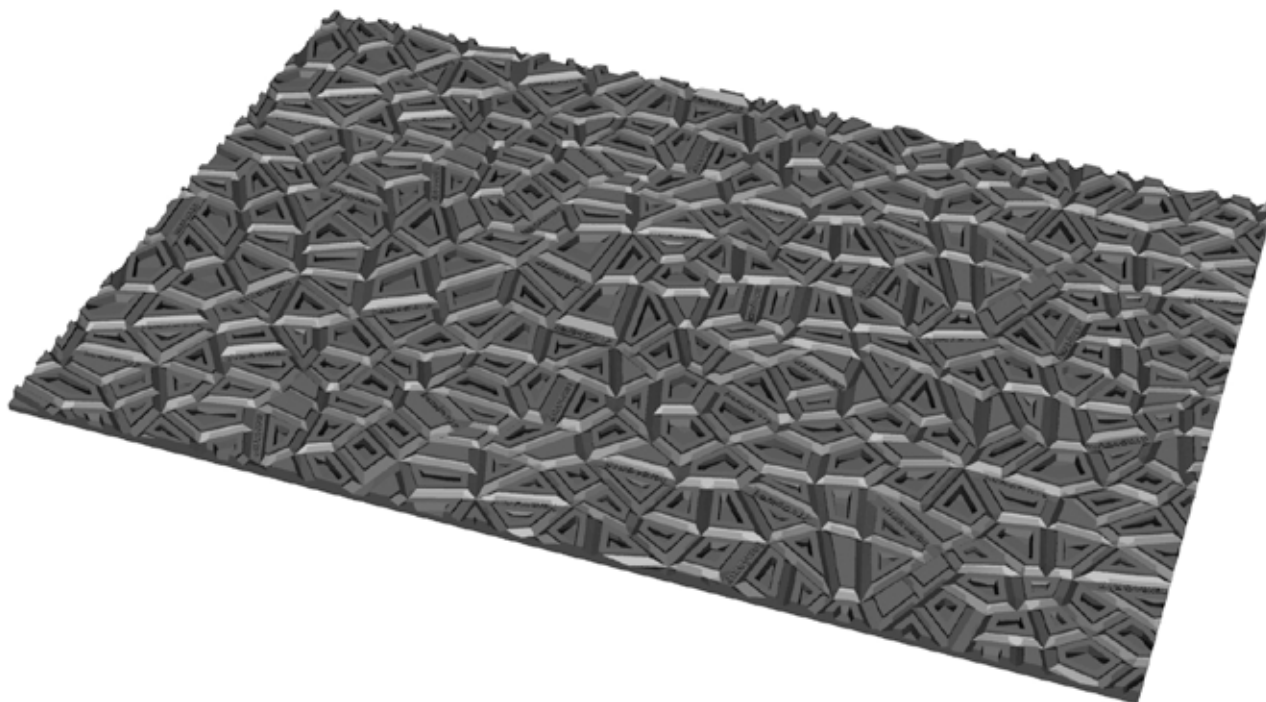
- 89 blue-white
- 94 yellow-black
- 96 red-black
- 56 stone grey



# hexa4<sup>®</sup> GRIP TRAIL-GRIP



Outsole cross-section | Cleatdepth 2,5 mm | Effective thickness 2,0 mm



## Features

- Premium SBR quality
- Specially developed for the leisure and outdoor sector
- Weight reduction compared to NBR-based High-Grip up to 25%
- Extremely flexible due to hollow profile-blocks
- Optimal for uneven surfaces
- Environmentally friendly production in Germany

designed ■  
developed and ■  
made in Germany ■

## Performance

- Hardness ca. 70 shore A
- Density ca. 1,18 g / cm<sup>3</sup>
- Abrasion ca. 150 mm<sup>3</sup>

## Sizes

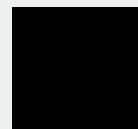
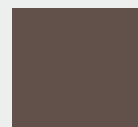
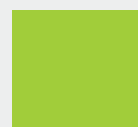
- ca. 61 x 111 cm  
(0,6771 qm)

## Thickness

- 4,5 mm

## Colors

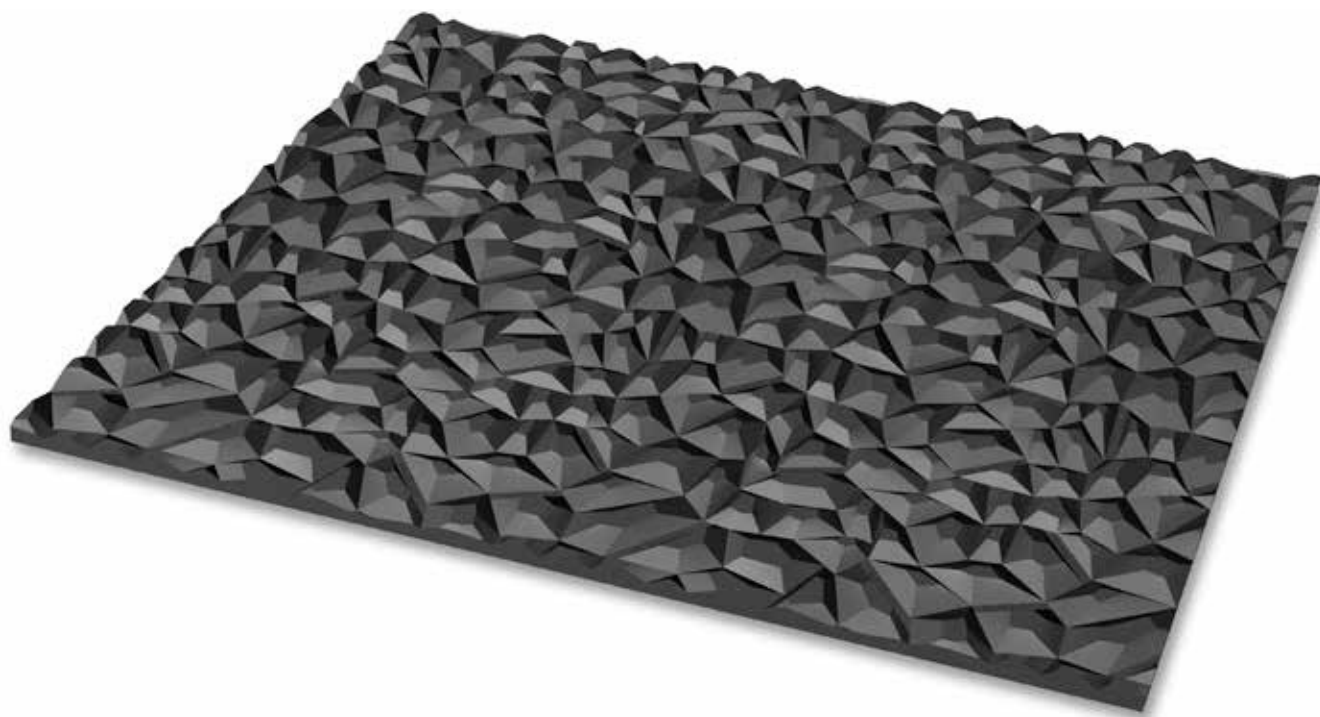
- 02 lemongreen  
(on request)
- 56 stone grey  
(on request)
- 86 black



# hexa4<sup>®</sup> GRIP URBAN



Plate cross-section | Cleatdepth 3,5 mm | Effective thickness 1,5 mm



## Features

- Open structure with flattened profile-blocks
- Excellent dirt extraction
- Wear-resistant, impact-elastic and slip-resistant
- Easy to glue
- Free confectionery /no fixed profile areas
- Unique design
- High quality SBR-rubber
- Environmentally friendly production in Germany

designed ■  
developed and ■  
made in Germany ■

## Performance

- Hardness ca. 70 shore A
- Density ca. 1,18 g / cm<sup>3</sup>
- Abrasion ca. 150 mm<sup>3</sup>

**Order-based production**

**Not in stock**

## Sizes

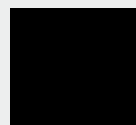
- ca. 61 x 111 cm  
(0,6771 qm)

## Thickness

- 5,0 mm

## Colors

- 86 black
- further colors  
on request





# SUSTAINABLE PRODUCTION

- Product-orientated compound development with an increased use of renewable resources
- Products with a higher integration of recycled materials
- Waste-avoidance strategies during the whole production process
- Energy savings
- Production of extra high-quality and therefore extra durable articles
- An accredited Auditor of the renowned PFI (Prüf- und Forschungsinstitut Primasens e.V.) analysed the production processes, the documentation of production processes as well as the products itself. As a result the OK Gummiwerk is the first German rubber factory received the 100% Vegan-eco certificate.



SOCIAL  
+ ECOLOGICAL  
SUSTAINABILITY  
CERTIFIED



Usually the rubber leftovers, which accrue during the production of shoe-outsoles, are getting disposed. Through the successful development work of the OK-Lab this shoe-tray is of a very high quality, which consists of 70% of these production residues – so the rubber residues are used sensibly.

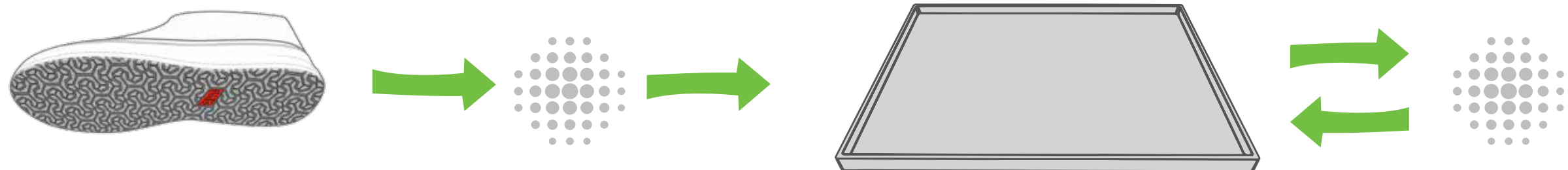
# SCHUHWANNE

Gummireste, die bei der Herstellung von Sohlen oder Platten anfallen, werden üblicherweise entsorgt. Für die hexa4GRIP®-Schuhwanne wurde im ok-Labor eine spezielle Gummiqualität entwickelt, die zu 70 % aus diesen Produktionsresten besteht – so werden die Gummireste sinnvoll genutzt.

## SHOE TRAY



43 cm x 63 cm • recycled rubber • black • easy to clean • made in Germany



hexa4  
GRIP®

made from waste of soles to tray, to tray, to tray, ...

DISCOVER  
THE STORY

vegan

recycled  
rubber

ok  
Gummiwerk